


SOULFUL STEPS THROUGH BHUTAN

 LAND OF THUNDER DRAGON

# BHUTAN

 PHUENTSHOLING, THIMPHU, PUNAKHA,  
CHELE LA PASS, PARO.

**₹ 25999/- PER PERSON**

**MIX GROUP TRIP | INCL. S.D.F - VISA  
6N/7D - EX: BAGDOGRA AIRPORT**

**Exclusive Bhutan Expertise:** When it comes to exploring Bhutan, we're your go-to experts. Since 2016, we've been dedicated solely to this beautiful country, so you can bet we know it inside out. Choosing a local agent like us means you get the real deal – we're all about those hidden spots and unique experiences that only insiders truly know about. See you in Bhutan.





## FIX DEPARTURE DATES

07 APR - 13 APR

14 APR - 20 APR

21 APR - 27 APR

28 APR - 04 MAY

05 MAY - 11 MAY

12 MAY - 18 MAY

19 MAY - 25 MAY

26 MAY - 01 JUN

02 JUN - 08 JUN

09 JUN - 15 JUN

16 JUN - 22 JUN

23 JUN - 29 JUN

04 AUG - 10 AUG

11 AUG - 17 AUG

18 AUG - 24 AUG

25 AUG - 31 AUG

01 SEP - 07 SEP

08 SEP - 14 SEP

15 SEP - 21 SEP

22 SEP - 28 SEP

29 SEP - 05 OCT

06 OCT - 12 OCT

13 OCT - 19 OCT

20 OCT - 26 OCT

27 OCT - 02 NOV

03 NOV - 09 NOV

10 NOV - 16 NOV

17 NOV - 23 NOV

24 NOV - 30 NOV

01 DEC - 07 DEC

08 DEC - 14 DEC

15 DEC - 21 DEC

22 DEC - 28 DEC

29 DEC - 04 JAN

## PAYMENT DETAILS

GST REG: 19BQTPB4212R1Z9

A/c Name: Tripkarado

A/c Number: 7573002100003961

IFC : PUNB0757300

Bank: Punjab National Bank

Account type: Current

BOOK NOW >>



SCAN & PAY USING ANY BHIM UPI APP



9749469121m1@pnb  
MERCHANT: TRIPKARADO

## BOOKING PROCESS

To secure your seat for our group tours, follow these simple steps:

1. Advance Payment: Pay an advance of 6,000.00/- per person. This initial payment helps ensure your reservation.
2. Booking Confirmation: Experience peace of mind with our "Pay on Arrival" system for tour bookings.
3. Ticket Acquisition: Once you have your tickets in hand, please inform us immediately.
4. After completing the booking, you will instantly receive a trip confirmation email from [tripkarado@gmail.com](mailto:tripkarado@gmail.com)

Embrace a worry-free journey as you eagerly anticipate an unforgettable adventure with us! This "Pay on Arrival" option is exclusively available for group tours only.



# BRIEF ITINERARY



<b>DAY - 1</b>	Start your trip from Bagdogra to Phuentsholing, enjoy the lively vibe there, and stay the night.
<b>DAY - 2</b>	Travel from Phuentsholing to Thimphu, taking in the beautiful views on the way, and settle in for a nice stay.
<b>DAY - 3</b>	Take a day trip from Thimphu to Punakha via Dochula pass explore its rich culture, and head back to Thimphu in the evening.
<b>DAY - 4</b>	Discover the sights of Thimphu, check out its culture and modern attractions, and then rest in Paro.
<b>DAY - 5</b>	Go on an exciting hike to the Tiger's Nest monastery in Paro, enjoy the stunning views, and relax there for the evening.
<b>DAY - 6</b>	Journey from Paro to Phuentsholing through the scenic Chele-La pass, admire the beauty around, and spend the night in Phuentsholing.
<b>DAY - 7</b>	Wrap up your adventure with a smooth ride from Phuentsholing back to Bagdogra, and cherish the memories of your Bhutan trip.

## DAY 1: Bagdogra to Phuentsholing

Travel time: 6 hours, 145 KMS

Situated on the border between India and Bhutan, **Phuentsholing** serves as the gateway to the kingdom. This bustling town offers a fascinating blend of Indian and Bhutanese cultures, reflecting its strategic location as a major trading hub. Explore the vibrant markets and immerse yourself in the bustling atmosphere before beginning your journey deeper into Bhutan.

- Upon your arrival at **Bagdogra Airport**, our representative will meet you, You'll start your journey from Bagdogra Airport reach Jiagaon our team member will guide you to cross the border into Bhutan via Pedestrian Terminal to reach Phuentsholing Town, The gateway to the land of thunder dragons, **welcome to Bhutan.**
- Get ready for an epic kickoff to your journey on day one! We've got an awesome **outdoor dinner** planned to set the mood for adventure, complete with a lineup of super fun activities and the option to splash around in the swimming pool if you're feeling the urge for some aquatic excitement. It's going to be a blast!
- You'll **stay overnight in Phuentsholing.**





## DAY 2: Phuentsholing to Thimphu

Travel time: 4 hours, 152.8 km) via NH 27

**Thimphu**, Bhutan's capital, was founded in 1216 by Lama Gyalwa Lhanangpa. Over the centuries, it transformed into the country's political, economic, and cultural hub. In 1961, King Jigme Singye Wangchuck designated Thimphu as the capital, succeeding Punakha. Under his reign, modernization occurred without compromising Bhutan's distinctive culture and traditions.

- After **breakfast**, ensure your luggage is ready, After immigration proceed towards Thimphu. The journey promises breathtaking scenery and memorable stops along the way.
- As you traverse the mountainous roads, make a stop at **Gedu Stupa**, Moving forward witness **Wangkha waterfalls**, stop for lunch and enjoy the drive through Bhutanese countryside.
- If time allows visit **Tashichho Dzong**: This majestic **fortress**, is one of the finest specimens of traditional Bhutanese architecture.
- In the evening, indulge in a captivating city walk around **Clock Tower, Thimphu city, on your own**. Thimphu is not only renowned for its cultural landmarks but also its **vibrant nightlife**. After dinner, consider exploring the city's nightlife scene, where you can unwind with live music, dance, and mingle with fellow travelers and locals alike.
- You'll spend the **night in Thimphu**. Meal Plan: MAP





## DAY 3: Thimphu to Punakha.

Travel time: 2 hours, 73.3 km. one way

Punakha, situated in the western part of Bhutan, holds significant historical and cultural importance. It served as the capital of Bhutan until 1955 and remains one of the country's most revered destinations, and the winter residence of the central monastic body. In Punakha, time seems to slow down, allowing visitors to immerse themselves in the rhythm of nature and spirituality.

Carry a bag pack for today, After breakfast start Punakha visit.

- **Dochula Pass:** This day involves a journey to Punakha En-route, Dochula Pass and its 108 chorten is located at an elevation of 3,988m.
- **Chimi Lhakhang – The Fertility Temple** Stationed at the top of a hillock, the is a site dedicated to Lama Drukpa Kuenley. Known as the ‘Divine Madman,
- **Punakha Dzong:** Also known as “the palace of great happiness” This Dzong is the most picturesque of all Bhutan ancient fortresses and it joins the mainland by an arched wooden bridge that contains many precious relics from the days when successive kings reigned the Kingdom from this Punakha valley
- **Suspension Bridge:** This hidden treasure in the Punakha Valley connects the rest of the valley to the old administrative center of Punakha Dzongkhag the whole deck is covered with prayer flags and provides a perfect spot for bird watching and photography.
- **Optional Activity: River Rafting.** The Mo Chhu river rafting is 10KM course which comprises of 10 rapids. The raft is 6-seater. River rafting time is approximately 1..5 hours
- In the evening, you'll return to **Thimphu for Stay.**





## Day 4: Thimphu Sightseeing

Travel time: 1:30 min, 50 km (Thimphu to Paro)

One's trip to Bhutan remains thoroughly incomplete without stepping a foot at Thimphu. The beautiful valley city is the theme if you consider your trip to Bhutan a musical journey. Spread from North to South on the western bank of a valley formed by the Raidak or Wang Chu river, Thimphu is stunningly beautiful and photogenic.

- Pack your luggage, have Breakfast, You'll spend the day exploring Thimphu's attractions today.
- **Buddha Dordenma:** The site is also known as Buddha View Point.
- **Takin Preservation Centre:** You will find the National animal of Bhutan "Takin" in this open zoo. Takin is one of the most endangered species of the World and it is available only in Bhutan.
- **Simply Bhutan:** is a living museum that provides insight into traditional Bhutanese life and culture. Participate in cultural activities such as **archery and traditional dance**, taste local wine **Aara**.
- **Jungshi Handmade Paper Factory:** Here, visitors can witness the traditional Bhutanese paper-making process, which dates back centuries and is still practiced using age-old techniques.
- **National Memorial Chorten:** This large chorten is one of the most visible landmarks in Thimphu, and for many Bhutanese it is the focus of daily worship.
- **Rinpung Dzong night view:** Highlight of the day, Just before entering Paro town Enjoy the enchanting night view of Rinpung Dzong! As the sun sets, the fortress-monastery lights up, creating a magical ambiance that's sure to leave you spellbound. It's a sight you won't want to miss! Don't forget to capture this mesmerizing sight with **Bhutanese attire in some beautiful photos**.
- You'll stay **overnight in Paro**





## Day 5: Hike to Tiger's Nest

Hike time: Around 6 to 7 hours, altitude: 3,120 m, 6.4 km

Tiger's Nest, also known as Paro Taktsang, is one of Bhutan's most iconic and revered landmarks. Legend has it that Guru Padmasambhava, also known as Guru Rinpoche, flew to this location on the back of a tigress in the 8th century, meditating in a cave for three years, three months, three weeks, and three days. This miraculous feat earned the site its name, Tiger's Nest.

- Carry a **Bag pack for today**. This day will begin with an early breakfast. Embark on the iconic hike to **Tiger's Nest** .
- **Taktsang Monastery** - The hike to Tiger's Nest is as much a spiritual pilgrimage as it is a physical challenge. The trail winds through dense pine forests and rhododendron trees, offering breathtaking views of the surrounding mountains and valleys.
- **Traditional Hot Stone Bath (Direct Pay Basis)**: It is very nice to experience Bhutanese hot stone baths. It is the perfect way to relax and wind down after a hike, it is considered for numerous health benefits help relieve deepset aches and pains. When placed in water, the hot stones crack and steam, releasing key minerals that help to aid stress and soothe the body..
- Your overnight stay will be in **Paro**.





## Day 6: Paro to Phuentsholing via Chele-la Pass

Travel Time: 7 hours, 224 KMS

Chele La Pass is a breathtaking mountain pass located in the western region of Bhutan, connecting the districts of Paro and Haa. In addition to its stunning natural beauty, Chele La Pass holds cultural significance as well. you'll be treated to sweeping vistas of snow-capped mountains, including the sacred peaks of Jomolhari.

- Prepare your luggage as you start your day with a hearty breakfast. Today's journey takes you from Paro back to Phuentsholing.
- **Stop at Paro Airport viewpoint.** From this vantage point, you'll enjoy stunning panoramic views of the airport nestled amidst the picturesque valley surrounded by lush green hills.
- En route, you'll traverse the scenic **Chele-la Pass, 37km from Paro** standing at an impressive altitude of 3,988 meters. This makes it the highest motorable road in Bhutan.
- Stop at iconic Iron Bridge, known as **Tamchog Zam**, Take a moment to appreciate this historic bridge and capture some memorable photographs against the scenic backdrop
- As you traverse the winding roads, make a stop at **Chuzom**, where the Paro and Thimphu rivers converge.
- Upon arriving in **Phuentsholing**, take this opportunity to indulge in some souvenir shopping, browsing through local handicrafts and treasures to bring home as mementos of your Bhutanese adventure.
- You'll spend the night in **Phuentsholing**.





## Day 7: Phuentsholing to Bagdogra Airport drop

Travel time: 6 hours, 145 KMS

- On the final day of your journey in Bhutan, the day begins with a leisurely breakfast at your hotel in Phuentsholing. After enjoying your meal, it's time to check out and bid farewell to the warm hospitality that has accompanied you throughout your stay.
- Your driver will be waiting to transfer you to Bagdogra Airport, where you'll catch your departing flight. As you embark on this final leg of your trip, take a moment to reflect on the memories you've made, the sights you've seen, and the experiences you've cherished during your time in the Land of the Thunder Dragon.

### AIRPORT PICK-UP & DROP:

Airport pick-up: 02:00 pm.

Airport drop: 02:00 pm. kindly book flight accordingly.

- If you have booked an early flight, please wait inside the airport until all six group members have arrived. Our team member will be at the airport to arrange your pickup.
- In the case of a late flight, you have the option to wait at the airport.

### DOCUMENTS REQUIRED FOR PERMITS:

- For Adults - Original Voter Card or Valid Passport (with minimum six months validity)
- For Below 18 Years - Passport or Birth Certificate  
(Details Should be written in English not in regional language)

**Note: Aadhaar Card is not valid for Adults or Children.**



## INCLUSIONS

The rates quoted in the packages are on per person basis & valid for Indian nationals only.

- Sustainable Development Fee (SDF) Included.
- Licensed Bhutanese Tour Guide to assist throughout the trip.
- 1+1 Night Phuentsholing, 2 Nights Thimphu & 2 Nights Paro Stay. Complimentary Breakfast & Dinner at accommodated hotels.
- Individual Tourist Sim Card with 100 Minutes Talk Time.
- Pickup & Drop from Bagdogra Airport (IXB) on Innova SIC basis.
- Bhutan Part Vehicle as per Itinerary on Hiace / Coster sharing SIC basis.
- Driver allowances, toll tax, parking charges, state taxes.

## EXCLUSIONS

- Any Airfare or Train Fare .
- Lunch, any extra meal/beverages not mentioned in the package. Additional extra usage of vehicle other than mentioned in the itinerary.  
vehicle timing (09:00 am to 06:00 pm).
- Any activities. Monuments entrance fees. Hot Stone Bath, Transfers other than those mentioned in the Itinerary.
- Any expenses caused by reasons beyond our control such as rescheduling or cancellations e.g. flights cancellations, flights delay any accidents, weather conditions, medical evacuations, riots, strikes etc. Such expenses will have to be paid directly.
- Any other expenses specifically not mentioned above.
- 5% GST is not included in the package.

## CANCELLATION POLICY

- Booking amount is non refundable.
- Any cancellation before 30 days of the trip date, a 50% amount of the trip cost will be charged as cancellation fees.
- Any cancellation within the 30 days of the trip date, No Refund shall be granted.
- No refund if you fail to show up on the day of departure under the given timeline that has been provided to you beforehand.
- If the entire trip is canceled due to natural calamities or unforeseen circumstances such as rain, snowfall, earthquake, landslides, strikes, bandhs, COVID-19 restrictions, or local government restrictions then non refundable.

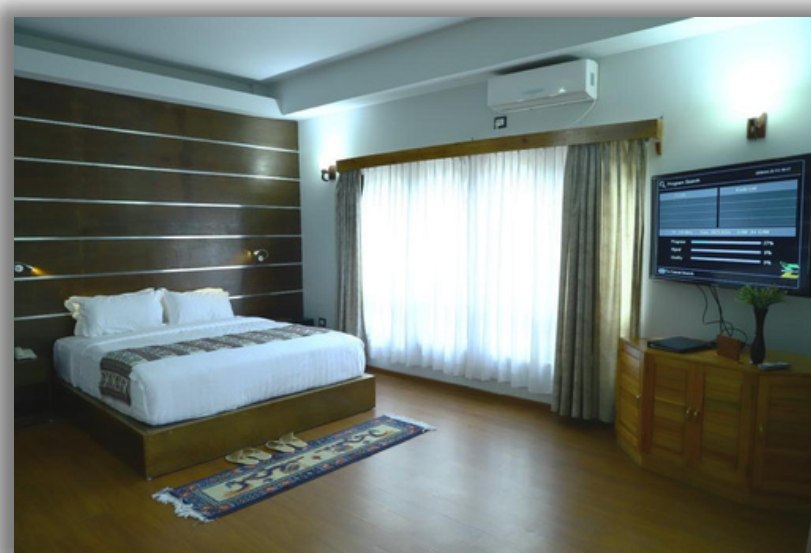


## HOTELS & OTHER DETAILS

All hotels are 3\* certified by Tourism Council of Bhutan.

- **Phuentsholing:** Evergreen 9 or similar (1st / 6th night)
- **Thimphu:** Thimphu Residency or similar (2nd / 3rd night)
- **Paro:** Gawaling Hotel or similar (4th / 5th night)

- The hotels mentioned above will be confirmed based on room availability. Otherwise, we will confirm hotels of a similar category.
- All three hotels are handpicked, The hotels we offer you are the best 3-star hotels approved by the Tourism Council of Bhutan.
- The hotels offer buffets with Bhutanese, Indian, Chinese, and Continental dishes. However, if you prefer not to eat touristy food, please inform your guide so that he can suggest you to local restaurants. Any expenses incurred from eating outside will be your responsibility.
- The room photos provided are intended to give you an idea of the rooms available at the property and may not depict the exact room you will be allocated.





## FREQUENTLY ASKED QUESTIONS

### 1. We're a couple, do we need to share a room?

- No, you do not need to share a room. Couples can opt for double sharing, which provides a private room exclusively for the two of you without sharing with other travelers.

### 2. I'm traveling Solo, how will I be accommodated?

- For solo travelers, accommodation will be arranged on a double sharing basis with another same-gender solo traveler. This allows you to share a room with another solo traveler of the same gender.

### 3. What currency is used in Bhutan?

- Bhutan's national currency is the Ngultrum (BTN). However, Indian currency is widely accepted everywhere. so there's no need to exchange INR for Bhutanese Ngultrum.

### 4. Are ATMs / Credit Card available in Bhutan?

- While there are ATMs in Bhutan, we recommend not relying solely on them. It's advisable to carry sufficient cash to ensure smooth transactions during your trip. Credit card is still not common in Bhutan. Very few stores/hotels accept VISA card with 5% charges.

### 5. Is Bhutan safe for solo traveling?

- Yes, Bhutan is considered one of the safest destinations for solo travelers. It offers a welcoming and secure environment. However, traveling solo in Bhutan may involve higher costs due to limited sharing options for transportation and accommodation. Joining a group can help reduce these costs.

### 6. Are there any restrictions on dress?

- There are no rules about what visitors should wear. However if you are planning to visit places of religious significance, respectful smart-casual clothing that covers your body from shoulders to knees is appropriate and appreciated.

### 7. How much cash can I bring into Bhutan?

- You may bring cash equivalent to US\$10,000 into the country.

### 8. What currency is used in Bhutan?

Bhutan's currency is called ngultrum. It's 1:1 with Indian rupees.

### 9. What is the weather like in Bhutan and when is the best time to visit?

Bhutan is a year-round destination. There are four seasons: summer (June to August), autumn (September to November), winter (December to February) and spring (March to May). But because of the range of altitudes in the country, and the influence of the north Indian monsoons, the climate is incredibly varied.

Bhutan's generally dry spring starts in early March and lasts until mid-April. It is a botanist's delight, with nature in full bloom. Summer weather commences in mid-April with occasional showers and continues to late June.



## Travels Traveler Conduct Policy

At Tripkarado, we are committed to ensuring that travel is a respectful, safe, and enjoyable experience for all our travelers. We expect all travelers to adhere to our conduct policy to guarantee the safety, security, and overall satisfaction of everyone involved.

- **Respect Each Other:** We value diversity and inclusivity. Treat fellow travelers with respect, kindness, and consideration. Embrace the opportunity to connect with like-minded individuals.
- **Abusive Behavior or Violence:** We have a zero-tolerance policy for abusive behavior or violence. Any traveler engaging in such behavior will face immediate termination from the group. We prioritize the safety and well-being of all our guests, and any actions that compromise this will not be tolerated.
- **Disruptive Behavior:** If, in our assessment or that of any authorized personnel, your conduct or the conduct of any member of your party is causing or is likely to cause distress, danger, annoyance to fellow guests, third parties, or damage to property, or if it leads to transportation delays or diversions, we reserve the right to terminate your travel arrangements with us on the spot. In such cases, we will no longer be liable for any services, and no refunds will be issued for lost services. Any expenses or costs incurred as a result of the termination will be your responsibility. Additionally, you may be held responsible for any damages or losses caused by your actions, and full payment for such damages must be made directly to the relevant service provider before departure.
- **Responsibility for Actions:** Travelers are responsible for their actions at all times. Excessive alcohol consumption and the misuse of drugs or controlled substances, whether legal or illegal, that jeopardize the safety of yourself, fellow travelers, or our staff are grounds for immediate removal from the tour.

Remember that your actions not only impact your own travel experience but also those of fellow travelers and the destinations you visit. We cannot be held responsible for the behavior of other guests or individuals unrelated to your booking. We appreciate your cooperation in making every journey with Tripkarado safe, enjoyable, and respectful for all.



## TRIP MEMORIES



## TESTIMONIALS

We are finally back home from our Bhutan tour and I would like to thank TRIPKARADO for organising tour ,throughout we had a wonderful time at every destination and the Hotels,Driver,wonderful guide was and how exceptionally made the Bhutan tour .

**KP BHANDARY**

**REVIEW**



I have been in tour with this group recently, and believe me such kind of travel organizers I have not seen before. They managed to plan and execute things in such an excellent manner that I couldn't feel I am in a group tour and I have to compromise somewhere.

**CHIRAG JINDAL**

**REVIEW**



We went to Bhutan in April 2024 with Tripkarado and had a great experience. I found them from an Instagram ad and was sceptical as this was our first group tour but it went amazing. All the itineraries were covered accordingly. The owner Vishal, Vivek, Susma (VVS travel- their former company name)

**MRIITKA DEY**

**REVIEW**







Join us on an eco-conscious adventure to Bhutan with Tripkarado! We're excited to announce our initiative to promote sustainability and reduce plastic waste during our trips. As part of our commitment to the environment, we encourage all our guests to bring their own reusable water bottles for the Bhutan excursion.



#### WILDLIFE PROTECTION:

- Plastic waste harms wildlife. By carrying reusable bottles, you prevent accidental litter that can harm Bhutan's diverse flora and fauna, preserving their natural habitats

#### HEALTHIER LIFESTYLE:

- Opt for your own bottle filled with fresh, clean water available throughout the journey. Stay hydrated sustainably and enjoys the health benefits of drinking clean, natural water.

#### EDUCATIONAL IMPACT:

- Your actions inspire others. By carrying a reusable bottle, you set an example for fellow travelers and locals, promoting a shift toward sustainable practices.

#### REGENERATIVE TOURISM:

- Embrace a regenerative approach to tourism by minimizing waste. Your small actions contribute to the restoration and preservation of Bhutan's natural beauty.

#### REDUCING CARBON FOOTPRINT:

- Plastic production and disposal contribute to carbon emissions. By avoiding single-use plastic bottles, you're helping mitigate climate change impacts on Bhutan's delicate ecosystems.

AT TRIPKARADO, WE BELIEVE IN RESPONSIBLE TOURISM, AND THAT STARTS WITH SMALL YET IMPACTFUL ACTIONS. BY CARRYING YOUR OWN REUSABLE WATER BOTTLES, YOU NOT ONLY CONTRIBUTE TO MINIMIZING PLASTIC POLLUTION BUT ALSO BECOME A PART OF THE POSITIVE CHANGE FOR A GREENER, CLEANER PLANET.



### OUR CONTACT INFO

IND: +91 9749469121 / BHU: +975 77845890

OFFICE ADDRESS: Swaraswati RD, Mangalabary,  
Jaigaon, Bhutan Border Town, Dist: Alipurduar,  
State: West Bengal. PIN: 736182

